



Miltenyi Biotec

Anti-DLL1 antibodies human

Contents

1. Description
 - 1.1 Background Information
 - 1.2 Applications
 - 1.3 Recommended antibody dilution
 - 1.4 Reagent requirements
2. General protocol for immunofluorescent staining
3. Example of immunofluorescent staining with Anti-DLL1 antibodies

Warnings

Reagents contain sodium azide. Under acidic conditions sodium azide yields hydrazoic acid, which is extremely toxic. Azide compounds should be diluted with running water before discarding. These precautions are recommended to avoid deposits in plumbing where explosive conditions may develop.

1. Description

This product is for research use only.

Components	1 mL monoclonal Anti-DLL1 antibodies, human conjugated to:
	FITC 130-096-981
	PE 130-096-966
	APC 130-096-961
	Biotin 130-096-967
Clone	MHD1-314 (isotype: mouse IgG1).
Capacity	100 tests or up to 10 ⁹ total cells.
Product format	Antibodies are supplied in buffer containing stabilizer and 0.05% sodium azide.
Storage	Store protected from light at 2–8 °C. Do not freeze. The expiration date is indicated on the vial label.

1.1 Background information

- Antigen: DLL1
- Synonym: delta-like 1; delta1; DELT
- Expression patterns: The MHD1-314 antibody reacts with the Delta-like protein 1, a type I transmembrane protein expressed by various organs, such as heart, pancreas, brain, muscle and the hematopoietic system and it is relevant for the differentiation of various cell types. In the immune system DLL1 is required for differentiation of marginal zone B cells and can be expressed by various antigen-presenting cells contributing to APC-directed peripheral T cell differentiation.

1.2 Applications

- Identification and enumeration of DLL1⁺ cells by flow cytometry.

1.3 Recommended antibody dilution

The recommended antibody dilution for all Anti-DLL1 conjugates is **1:11 for up to 10⁷ cells/100 µL** of buffer for labeling of cells and subsequent analysis by flow cytometry.

The antibody is suited for staining of formaldehyd-fixed cells.

1.4 Reagent requirements

- Buffer: Prepare a solution containing phosphate-buffered saline (PBS), pH 7.2, 0.5% bovine serum albumin (BSA), and 2 mM EDTA by diluting MACS[®] BSA Stock Solution (# 130-091-376) 1:20 with autoMACS[®] Rinsing Solution (# 130-091-222). Keep buffer cold (2–8 °C).

▲ **Note:** EDTA can be replaced by other supplements such as anticoagulant citrate dextrose formula-A (ACD-A) or citrate phosphate dextrose (CPD). Buffers or media containing Ca²⁺ or Mg²⁺ are not recommended for use.

- (Optional) Conjugated anti-biotin antibodies, e.g., Anti-Biotin-PE (# 130-090-756) as secondary antibody reagent in combination with Anti-DLL1-Biotin.
- (Optional) For antibodies for additional staining or for isotype control, refer to www.miltenyibiotec.com/antibodies.
- (Optional) Propidium Iodide Solution (# 130-093-233) for flow cytometric exclusion of dead cells without fixation.

2. General protocol for immunofluorescent staining

Volumes given below are for **up to 10⁷** nucleated cells. When working with fewer than 10⁷ cells, use the same volumes as indicated. When working with higher cell numbers, scale up all reagent volumes and total volumes accordingly (e.g. for 2×10⁷ nucleated cells, use twice the volume of all indicated reagent volumes and total volumes).

1. Determine cell number.
2. Centrifuge cell suspension at 300×g for 10 minutes. Aspirate supernatant completely.
3. Resuspend up to 10⁷ nucleated cells per 100 µL of buffer.
4. Add 10 µL of the Anti-DLL1 antibody.
5. Mix well and incubate for 10 minutes in the dark in the refrigerator (2–8 °C).

▲ **Note:** Higher temperatures and/or longer incubation times may lead to non-specific cell labeling. Working on ice requires increased incubation times.

6. Wash cells by adding 1–2 mL of buffer and centrifuge at 300×g for 10 minutes. Aspirate supernatant completely.
7. (Optional) If Anti-DLL1-Biotin was used, resuspend the cell pellet in 100 µL of buffer, add 10 µL of anti-biotin antibody,

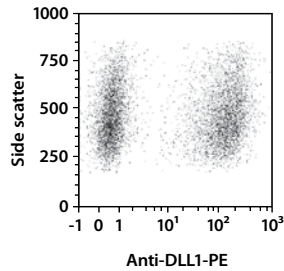
140-000-000-001

and continue as described in steps 5 and 6.

8. Resuspend cell pellet in a suitable amount of buffer for analysis by flow cytometry or fluorescence microscopy.

3. Example of immunofluorescent staining with Anti-DLL1 antibodies

Human DLL1-transfected CHO cells were stained with Anti-DLL1 antibodies conjugated to PE and analyzed by flow cytometry using the MACSQuant® Analyzer. Cell debris and dead cells were excluded from the analysis based on scatter signals and propidium iodide fluorescence.



For more examples please refer to the respective product page at www.miltenyibiotec.com/antibodies.

Refer to www.miltenyibiotec.com for all data sheets and protocols.

Warranty

The products sold hereunder are warranted only to be free from defects in workmanship and material at the time of delivery to the customer. Miltenyi Biotec GmbH makes no warranty or representation, either expressed or implied, with respect to the fitness of a product for a particular purpose. There are no warranties, expressed or implied, which extend beyond the technical specifications of the products. Miltenyi Biotec GmbH's liability is limited to either replacement of the products or refund of the purchase price. Miltenyi Biotec GmbH is not liable for any property damage, personal injury or economic loss caused by the product.

autoMACS, MACS, MACSQuant, and VioBlue are registered trademarks of Miltenyi Biotec GmbH.

Copyright © 2011 Miltenyi Biotec GmbH. All rights reserved.