

Contents

1. Description
 - 1.1 Principle of the MACS® Separation
 - 1.2 Background information
 - 1.3 Applications
 - 1.4 Reagent and instrument requirements
2. Protocol
 - 2.1 Sample preparation
 - 2.2 Magnetic labeling
 - 2.3 Magnetic separation
3. Example of a separation using the CD133 MicroBead Kit
4. References

1. Description

Components	2 mL CD133 MicroBeads, human: MicroBeads conjugated to monoclonal anti-human CD133 antibodies (isotype: mouse IgG1, clone AC133).
	2 mL FcR Blocking Reagent, human
Specificity	CD133 antigen, epitope (CD133/1) ¹ .
Capacity	For 2×10 ⁹ total cells, up to 100 separations.
Product format	CD133 MicroBeads are supplied in buffer containing stabilizer and 0.05% sodium azide.
Storage	Store protected from light at 2–8 °C. Do not freeze. The expiration date is indicated on the vial label.

1.1 Principle of the MACS® Separation

First, the CD133⁺ cells are magnetically labeled with CD133 MicroBeads. Then, the cell suspension is loaded onto a MACS® Column, which is placed in the magnetic field of a MACS Separator. The magnetically labeled CD133⁺ cells are retained within the column. The unlabeled cells run through; this cell fraction is thus depleted of CD133⁺ cells. After removing the column from the magnetic field, the magnetically retained CD133⁺ cells can be eluted as the positively selected cell fraction. To increase the purity, the positively selected cell fraction containing the CD133⁺ cells is separated over a second column.

1.2 Background information

The CD133 MicroBead Kit is a magnetic labeling system designed for the positive selection of CD133⁺ cells. It allows the single-step isolation of nonhematopoietic and early hematopoietic progenitors

and stem cells. The CD133 molecule is a 5-transmembrane cell surface antigen with a molecular weight of 117 kD.² The CD133/1 (clone AC133) antibody recognizes epitope 1 of the CD133 antigen.¹ In the hematopoietic system, CD133 expression is restricted to a subset of CD34^{bright} stem and progenitor cells in human fetal liver, bone marrow, cord blood, and peripheral blood.³ Isolated from hematopoietic sources, CD133⁺ cells can become adherent and are reported to become CD133⁻ during culture⁴. The CD34⁺CD133⁺ cell population, which includes CD34⁺CD38⁻ cells, was shown to be capable of repopulating NOD/SCID mice.⁵ Recently, CD133 has also been found to be expressed on circulating endothelial progenitor cells^{6,7} and fetal neural stem cells^{8,9} as well as on other tissue-specific stem cells, such as renal¹⁰ and prostate¹¹ stem cells. Lately, when isolated from tumor tissue, the CD133⁺ population can be enriched for tumor-initiating cells.^{11–15} CD133 MicroBeads have been used to isolate adult stem cells from cord blood and as a starting population for reprogramming towards iPS cells.¹⁶ CD133 expression has been found on undifferentiated human ES cells. Therefore CD133 MicroBeads could be used for enrichment or depletion of these cells.¹⁷

1.3 Applications

- Positive selection or depletion of cells expressing human CD133 antigen.
- Isolation or depletion of CD133⁺ cells from peripheral blood mononuclear cells (PBMCs) or single-cell suspensions from tissue.
- CD133⁺ cells are used in basic stem cell research, stem cell evaluation, stem cell expansion, research in hematological malignancies, stem cell plasticity, and potential cellular therapies as well as in tissue regeneration and cancer research.

1.4 Reagent and instrument requirements

- Buffer: Prepare a solution containing phosphate-buffered saline (PBS), pH 7.2, 0.5% bovine serum albumin (BSA), and 2 mM EDTA by diluting MACS BSA Stock Solution (# 130-091-376) 1:20 with autoMACS® Rinsing Solution (# 130-091-222). Keep buffer cold (2–8 °C). Degas buffer before use, as air bubbles could block the column.

▲ **Note:** EDTA can be replaced by other supplements such as anticoagulant citrate dextrose formula-A (ACD-A) or citrate phosphate dextrose (CPD). BSA can be replaced by other proteins such as human serum albumin, human serum, or fetal bovine serum (FBS). Buffers or media containing Ca²⁺ or Mg²⁺ are not recommended for use.

- (Optional) Fluorochrome-conjugated antibodies for flow cytometric analysis, e.g., CD133/2 (293C3)-PE (# 130-090-853), CD133/2 (293C3)-APC (# 130-090-854), CD133/2 (293C3)-Biotin, CD34-FITC (# 130-081-001), CD34-APC (# 130-090-954), or CD34-PE (# 130-081-002). For more information about fluorochrome-conjugated antibodies see www.miltenyibiotec.com.

- MACS Columns and MACS Separators: CD133⁺ cells can be enriched by using MS, LS, or XS Columns or depleted with the use of LD, CS, or D Columns. Cells which strongly express the CD133 antigen can also be depleted using MS, LS, or XS Columns. Positive selection or depletion can also be performed by using the autoMACS Pro or the autoMACS Separator.

Column	Max. number of labeled cells	Max. number of total cells	Separator
Positive selection			
MS	10 ⁷	2×10 ⁸	MiniMACS, OctoMACS, VarioMACS, SuperMACS
LS	10 ⁸	2×10 ⁹	MidiMACS, QuadroMACS, VarioMACS, SuperMACS
XS	10 ⁹	2×10 ¹⁰	SuperMACS
Depletion			
LD	10 ⁸	5×10 ⁸	MidiMACS, QuadroMACS, VarioMACS, SuperMACS
CS	2×10 ⁸		VarioMACS, SuperMACS
D	10 ⁹		SuperMACS
Positive selection or depletion			
autoMACS	2×10 ⁸	4×10 ⁹	autoMACS Pro, autoMACS

▲ **Note:** Column adapters are required to insert certain columns into the VarioMACS™ or SuperMACS™ Separators. For details see the respective MACS Separator data sheet.

- (Optional) Propidium Iodide Solution (# 130-093-233) or 7-AAD for flow cytometric exclusion of dead cells.
- (Optional) Dead Cell Removal Kit (# 130-090-101) for the depletion of dead cells.
- (Optional) Pre-Separation Filters (# 130-041-407) to remove cell clumps.

2. Protocol

2.1 Sample preparation

When working with anticoagulated peripheral blood or buffy coat, peripheral blood mononuclear cells (PBMCs) should be isolated by density gradient centrifugation, for example, using Ficoll-Paque™.

▲ **Note:** To remove platelets after density gradient separation, resuspend cell pellet in buffer and centrifuge at 200×g for 10–15 minutes at 20 °C. Carefully aspirate supernatant. Repeat washing step.

When working with tissues or lysed blood, prepare a single-cell suspension using standard methods.

For details see the protocols section at www.miltenyibiotec.com/protocols.

For preparation of cord blood cells, bone marrow cells, or cells from leukapheresis material, please refer to the sample preparation protocols at www.miltenyibiotec.com/protocols.

▲ Dead cells may bind non-specifically to MACS MicroBeads. To remove dead cells, we recommend using density gradient centrifugation or the Dead Cell Removal Kit (# 130-090-101).



2.2 Magnetic labeling

▲ Work fast, keep cells cold, and use pre-cooled solutions. This will prevent capping of antibodies on the cell surface and non-specific cell labeling.

▲ Volumes for magnetic labeling given below are for up to 10⁸ total cells. When working with fewer than 10⁸ cells, use the same volumes as indicated. When working with higher cell numbers, scale up all reagent volumes and total volumes accordingly (e.g. for 2×10⁸ total cells, use twice the volume of all indicated reagent volumes and total volumes).

▲ For optimal performance it is important to obtain a single-cell suspension before magnetic labeling. Pass cells through 30 µm nylon mesh (Pre-Separation Filters, # 130-041-407) to remove cell clumps which may clog the column. Moisten filter with buffer before use.

▲ The recommended incubation temperature is 2–8 °C. Working on ice may require increased incubation times. Higher temperatures and/or longer incubation times may lead to non-specific cell labeling.

1. Determine cell number.
2. Centrifuge cell suspension at 300×g for 10 minutes. Aspirate supernatant completely.
3. Resuspend cell pellet in 300 µL of buffer per 10⁸ total cells.
4. Add 100 µL of FcR Blocking Reagent per 10⁸ total cells.
5. Add 100 µL of CD133 MicroBeads per 10⁸ total cells.
6. Mix well and incubate for 30 minutes in the refrigerator (2–8 °C).
7. (Optional) Add staining antibodies, e.g., 50 µL of CD133/2 (293C3)-PE (# 130-090-853), and incubate for 5 minutes in the dark in the refrigerator (2–8 °C).
8. Wash cells by adding 1–2 mL of buffer per 10⁸ cells and centrifuge at 300×g for 10 minutes. Aspirate supernatant completely.
9. Resuspend up to 10⁸ cells in 500 µL of buffer.
 - ▲ **Note:** For higher cell numbers, scale up buffer volume accordingly.
 - ▲ **Note:** For depletion with LD Columns, resuspend up to 1.25×10⁸ cells in 500 µL of buffer.
10. Proceed to magnetic separation (2.3).



2.3 Magnetic separation

▲ Choose an appropriate MACS Column and MACS Separator according to the number of total cells and the number of CD133⁺ cells. For details see table in section 1.4.

▲ Always wait until the column reservoir is empty before proceeding to the next step.

Magnetic separation with MS or LS Columns

▲ To achieve highest purities, perform two consecutive column runs.

1. Place column in the magnetic field of a suitable MACS Separator. For details see the respective MACS Column data sheet.

- Prepare column by rinsing with the appropriate amount of buffer:

MS: 500 μ L LS: 3 mL

- Apply cell suspension onto the column. Collect flow-through containing unlabeled cells.
- Wash column with the appropriate amount of buffer. Collect unlabeled cells that pass through and combine with the effluent from step 3.

MS: 3 \times 500 μ L LS: 3 \times 3 mL

▲ **Note:** Perform washing steps by adding buffer aliquots only when the column reservoir is empty.

- Remove column from the separator and place it on a suitable collection tube.

▲ **Note:** To perform a second column run, you may elute the cells directly from the first onto the second, equilibrated column instead of a collection tube.

- Pipette the appropriate amount of buffer onto the column. Immediately flush out the magnetically labeled cells by firmly pushing the plunger into the column.

MS: 1 mL LS: 5 mL

- To increase purity of CD133⁺ cells, enrich the eluted fraction over a second MS or LS Column. Repeat the magnetic separation procedure as described in steps 1 to 6 by using a new column.

Magnetic separation with XS Columns

For instructions on the column assembly and the separation refer to the XS Column data sheet.

Depletion with LD Columns

- Place LD Column in the magnetic field of a suitable MACS Separator. For details see LD Column data sheet.
- Prepare column by rinsing with 2 mL of buffer.
- Apply cell suspension onto the column.
- Collect unlabeled cells that pass through and wash column with 2 \times 1 mL of buffer. Collect total effluent; this is the unlabeled cell fraction. Perform washing steps by adding buffer two times. Only add new buffer when the column reservoir is empty.

Depletion with CS Columns

- Assemble CS Column and place it in the magnetic field of a suitable MACS Separator. For details see CS Column data sheet.
- Prepare column by filling and rinsing with 60 mL of buffer. Attach a 22G flow resistor to the 3-way stopcock of the assembled column. For details see CS Column data sheet.
- Apply cell suspension onto the column.
- Collect unlabeled cells that pass through and wash column with 30 mL buffer from the top. Collect total effluent; this is the unlabeled cell fraction.

Depletion with D Columns

For instructions on column assembly and separation refer to the D Column data sheet.

Magnetic separation with the autoMACS[®] Pro Separator or the autoMACS[®] Separator

▲ Refer to the respective user manual for instructions on how to use the autoMACS[®] Pro Separator or the autoMACS Separator.

▲ Buffers used for operating the autoMACS Pro Separator or the autoMACS Separator should have a temperature of ≥ 10 °C.

▲ Program choice depends on the isolation strategy, the strength of magnetic labeling, and the frequency of magnetically labeled cells. For details refer to the section describing the cell separation programs in the respective user manual.

Magnetic separation with the autoMACS[®] Pro Separator

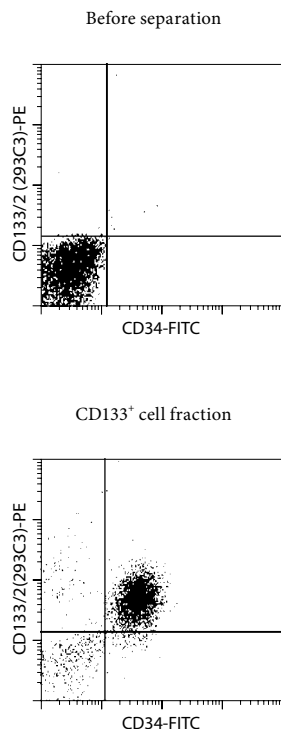
- Prepare and prime the instrument.
- Apply tube containing the sample and provide tubes for collecting the labeled and unlabeled cell fractions. Place sample tube in row A of the tube rack and the fraction collection tubes in rows B and C.
 - Positive selection from peripheral blood, bone marrow, or leukapheresis: "Posseld"
 - Collect positive fraction in row C of the tube rack.
 - Positive selection from cord blood: "Posseld2"
 - Collect positive fraction in row C of the tube rack.
 - Depletion: "Depletes"
 - Collect negative fraction in row B of the tube rack.
- For a standard separation choose one of the following programs:

Magnetic separation with the autoMACS[®] Separator

- Prepare and prime the instrument.
- Apply tube containing the sample and provide tubes for collecting the labeled and unlabeled cell fractions. Place sample tube at the uptake port and the fraction collection tubes at port neg1 and port pos 2.
 - Positive selection from peripheral blood, bone marrow, or leukapheresis: "Posseld"
 - Collect positive fraction from outlet port pos 2.
 - Positive selection from cord blood: "Posseld2"
 - Collect positive fraction from outlet port pos 2.
 - Depletion: "Depletes"
 - Collect negative fraction from outlet port neg1.
- For a standard separation choose one of the following programs:

3. Example of a separation using the CD133 MicroBead Kit

CD133⁺ hematopoietic stem and progenitor cells were isolated from non-mobilized human PBMCs using the CD133 MicroBead Kit, MS Columns, and a MiniMACS™ Separator. Cells were fluorescently stained with CD34-FITC (# 130-081-001) and CD133/2 (293C3)-PE (# 130-090-853) and analyzed by flow cytometry. Cell debris and dead cells were excluded from the analysis based on scatter signals and propidium iodide fluorescence.



4. References

1. Yin, A. H. *et al.* (1997) AC133, a novel marker for human hematopoietic stem and progenitor cells. *Blood* 90: 5002–5012.
2. Miraglia, S. *et al.* (1997) A novel five-transmembrane hematopoietic stem cell antigen: isolation, characterization, and molecular cloning. *Blood* 90: 5013–5021.
3. Bühring, H. J. *et al.* (1999) Expression of novel surface antigens on early hematopoietic cells. *Ann NY Acad Sci*: 872: 25–39.
4. Kuci, S. *et al.* (2003) Identification of a novel class of CD133⁺CD34⁻ peripheral blood cells with SCID-repopulating capacity. *MACS&more* 7/1.
5. de Wynter, E. A. *et al.* (1998) CD34⁺AC133⁺ cells isolated from cord blood are highly enriched in long-term culture-initiating cells, NOD/SCID-repopulating cells and dendritic cell progenitors. *Stem Cells* 16: 387–396.
6. Gehling, U. M. *et al.* (2000) In vitro differentiation of endothelial cells from AC133-positive progenitor cells. *Blood* 95: 3106–3112.
7. Peichev, M. *et al.* (2000) Expression of VEGFR-2 and AC133 by circulating human CD34(+) cells identifies a population of functional endothelial precursors. *Blood* 95: 952–958.
8. Uchida, N. *et al.* (2000) Direct isolation of human central nervous system stem cells. *Proc. Natl. Acad. Sci. USA* 97: 14720–14725.
9. Cunnings, B. J. *et al.* (2005) Human neural stem cells differentiate and promote locomotor recovery in spinal cord-injured mice. *PNAS* 102: 14069–14074.
10. Bussolati, B. *et al.* (2005) Isolation of Renal Progenitor cells from Adult Human Kidney. *Am. J.* 166: 545–555.
11. Richardson, G. *et al.* (2004) CD133, a novel marker for human prostatic epithelial stem cells. *J. Cell Sci.* 117: 3539–3545.
12. Singh, S. K. *et al.* (2004) Identification of human brain tumour initiating cells. *Nature* 432: 396–401.
13. Collins, A. T. *et al.* (2005) Prospective identification of tumorigenic prostate cancer stem cells. *Cancer Res.* 65: 10946–10951.
14. Ricci-Vitiani, L. *et al.* (2007) Identification and expansion of human colon-cancer-initiating cells. *Nature* 445: 111–115.
15. O'Brien, C. A. *et al.* (2007) A human colon cancer cell capable of initiating tumour growth in immunodeficient mice. *Nature* 445: 106–110.
16. Giorgetti, A. *et al.* (2009) Generation of induced pluripotent stem cells from human cord blood using OCT4 and SOX2. *Cell Stem Cell* 5: 353–357.
17. Prokhorova, T. *et al.* (2009) manuscript in preparation.

All protocols and data sheets are available at www.miltenyibiotec.com.

Warnings

Reagents contain sodium azide. Under acidic conditions sodium azide yields hydrazoic acid, which is extremely toxic. Azide compounds should be diluted with running water before discarding. These precautions are recommended to avoid deposits in plumbing where explosive conditions may develop.

Warranty

The products sold hereunder are warranted only to be free from defects in workmanship and material at the time of delivery to the customer. Miltenyi Biotec GmbH makes no warranty or representation, either expressed or implied, with respect to the fitness of a product for a particular purpose. There are no warranties, expressed or implied, which extend beyond the technical specifications of the products. Miltenyi Biotec GmbH's liability is limited to either replacement of the products or refund of the purchase price. Miltenyi Biotec GmbH is not liable for any property damage, personal injury or economic loss caused by the product.

autoMACS and MACS are registered trademarks and MidiMACS, MiniMACS, OctoMACS, QuadroMACS, SuperMACS, and VarioMACS are trademarks of Miltenyi Biotec GmbH.

Ficoll-Paque is a trademark of GE Healthcare companies.

Copyright © 2009 Miltenyi Biotec GmbH. All rights reserved.