

Contents

1. Description
 - 1.1 Principle of the MACS® Separation
 - 1.2 Background information
 - 1.3 Applications
 - 1.4 Reagent and instrument requirements
2. Protocol
 - 2.1 Sample preparation
 - 2.2 Magnetic labeling
 - 2.3 Magnetic separation
3. Example of a separation using the Anti-Ly-6G MicroBead Kit

1. Description

Components	<p>1 mL Anti-Ly-6G-Biotin, mouse: monoclonal anti-mouse Ly-6G antibody conjugated to biotin (isotype: rat IgG2a).</p> <p>2 mL Anti-Biotin MicroBeads: MicroBeads conjugated to monoclonal anti-biotin antibodies (isotype: mouse IgG1).</p>
Capacity	For 2×10 ⁹ total cells.
Product format	All reagents are supplied in buffer containing stabilizer and 0.05% sodium azide.
Storage	Store protected from light at 2–8 °C. Do not freeze. The expiration date is indicated on the vial label.

1.1 Principle of the MACS® Separation

For MACS® Separation, cells are incubated with Anti-Ly-6G-Biotin and Anti-Biotin MicroBeads, by which Ly-6G-expressing cells are magnetically labeled. Subsequently, cells are isolated by separation over a MACS Column which is placed in the magnetic field of a MACS Separator. The magnetically labeled Ly-6G⁺ cells are retained within the column. The unlabeled Ly-6G⁻ cells run through; this cell fraction is thus depleted of Ly-6G⁺ cells. After removing the column from the magnetic field, the magnetically retained Ly-6G⁺ cells can be eluted as the positively selected cell fraction.

1.2 Background information

The Anti-Ly-6G MicroBead Kit was developed for positive selection or depletion of mouse neutrophils from lymphoid tissues. Ly-6G is highly expressed on neutrophils, at lower level on a subset of eosinophils, and transiently during developmental stages on monocytes. For separation, neutrophils are indirectly magnetically labeled with Anti-Ly-6G-Biotin and Anti-Biotin MicroBeads. The Anti-Ly-6G Microbead Kit has been optimized for isolation of Ly-6G^{high}-expressing cells.

1.3 Applications

- Isolation of mouse neutrophils, for example, for *in vitro* analysis or co-culture.

1.4 Reagent and instrument requirements

- Buffer: Prepare a solution containing phosphate-buffered saline (PBS), pH 7.2, 0.5% bovine serum albumin (BSA), and 2 mM EDTA by diluting MACS BSA Stock Solution (# 130-091-376) 1:20 with autoMACS® Rinsing Solution (# 130-091-222). Keep buffer cold (2–8 °C). Degas buffer before use, as air bubbles could block the column.

▲ **Note:** EDTA can be replaced by other supplements such as anticoagulant citrate dextrose formula-A (ACD-A) or citrate phosphate dextrose (CPD). BSA can be replaced by other proteins such as mouse serum albumin, mouse serum, or fetal bovine serum (FBS). Buffers or media containing Ca²⁺ or Mg²⁺ are not recommended for use.

- MACS Columns and MACS Separators: Ly-6G⁺ cells can be enriched by using MS, LS, or XS Columns or depleted with the use of LD, CS, or D Columns. Cells which strongly express the Ly-6G antigen can also be depleted using MS, LS, or XS Columns. Positive selection or depletion can also be performed by using the autoMACS Pro or the autoMACS Separator.

Column	Max. number of labeled cells	Max. number of total cells	Separator
--------	------------------------------	----------------------------	-----------

Positive selection

MS	10 ⁷	2×10 ⁸	MiniMACS, OctoMACS, VarioMACS, SuperMACS II
LS	10 ⁸	2×10 ⁹	MidiMACS, QuadroMACS, VarioMACS, SuperMACS II
XS	10 ⁹	2×10 ¹⁰	SuperMACS II

Depletion

LD	10 ⁸	5×10 ⁸	MidiMACS, QuadroMACS, VarioMACS, SuperMACS II
CS	2×10 ⁸		VarioMACS, SuperMACS II
D	10 ⁹		SuperMACS II

Positive selection or depletion

autoMACS	2×10 ⁸	4×10 ⁹	autoMACS Pro, autoMACS
----------	-------------------	-------------------	------------------------

▲ **Note:** Column adapters are required to insert certain columns into the VarioMACS™ or SuperMACS™ II Separators. For details refer to the respective MACS Separator data sheet.

- (Optional) Fluorochrome-conjugated antibodies for flow cytometric analysis, e.g., Anti-Biotin-FITC (# 130-090-857), Anti-Biotin-PE (# 130-090-756), Anti-Biotin-APC (# 130-090-856), Anti-Gr-1-VioBlue® (# 130-094-362), Anti-Gr-1-FITC (# 130-091-934), Anti-Gr-1-PE (# 130-091-932), CD11b-FITC (# 130-081-201), or CD11b-PE (# 130-091-240). For more information about antibodies refer to www.miltenyibiotec.com.

- (Optional) Propidium Iodide Solution (# 130-093-233) or 7-AAD for flow cytometric exclusion of dead cells.
- (Optional) Dead Cell Removal Kit (# 130-090-101) for the depletion of dead cells.
- (Optional) Pre-Separation Filters, 30 μm (# 130-041-407) to remove cell clumps.

2. Protocol

2.1 Sample preparation

When working with lymphoid organs, non-lymphoid tissues, or peripheral blood, prepare a single-cell suspension using manual methods or the gentleMACS™ Dissociator.

For details refer to the protocols section at www.miltenyibiotec.com/protocols.

▲ Dead cells may bind non-specifically to MACS MicroBeads. To remove dead cells, we recommend using density gradient centrifugation or the Dead Cell Removal Kit (# 130-090-101).

2.2 Magnetic labeling

▲ Work fast, keep cells cold, and use pre-cooled solutions. This will prevent capping of antibodies on the cell surface and non-specific cell labeling.

▲ Volumes for magnetic labeling given below are for up to 10^8 total cells. When working with fewer than 10^8 cells, use the same volumes as indicated. When working with higher cell numbers, scale up all reagent volumes and total volumes accordingly (e.g. for 2×10^8 total cells, use twice the volume of all indicated reagent volumes and total volumes).

▲ For optimal performance it is important to obtain a single-cell suspension before magnetic labeling. Pass cells through 30 μm nylon mesh (Pre-Separation Filters, 30 μm , # 130-041-407) to remove cell clumps which may clog the column. Moisten filter with buffer before use.

▲ The recommended incubation temperature is 2–8 °C. Higher temperatures and/or longer incubation times may lead to non-specific cell labeling. Working on ice may require increased incubation times.

1. Determine cell number.
2. Centrifuge cell suspension at 300 \times g for 10 minutes. Aspirate supernatant completely.
3. Resuspend cell pellet in 200 μL of buffer per 10^8 total cells.
4. Add 50 μL of Anti-Ly-6G-Biotin per 10^8 total cells.
5. Mix well and incubate for 10 minutes in the refrigerator (2–8 °C).
6. Add 150 μL of buffer per 10^8 total cells.
7. Add 100 μL of Anti-Biotin MicroBeads per 10^8 total cells.
8. Mix well and incubate for 15 minutes in the refrigerator (2–8 °C).

9. (Optional) Add staining antibodies, e.g., 15 μL of Anti-Biotin-APC (# 130-090-856), 15 μL of Anti-GR-1-PE (# 130-091-932), 15 μL of CD11b-FITC (# 130-081-201), and incubate for 5 minutes in the dark in the refrigerator (2–8 °C).
10. Wash cells by adding 5–10 mL of buffer per 10^8 cells and centrifuge at 300 \times g for 10 minutes. Aspirate supernatant completely.
11. Resuspend up to 10^8 cells in 500 μL of buffer.
 - ▲ Note: For higher cell numbers, scale up buffer volume accordingly.
 - ▲ Note: For depletion with LD Columns, resuspend up to 1.25×10^8 cells in 500 μL of buffer.
12. Proceed to magnetic separation (2.3).



2.3 Magnetic separation

▲ Choose an appropriate MACS Column and MACS Separator according to the number of total cells and the number of Ly-6G⁺ cells. For details refer to the table in section 1.4.

▲ Always wait until the column reservoir is empty before proceeding to the next step.

Magnetic separation with MS or LS Columns

1. Place column in the magnetic field of a suitable MACS Separator. For details refer to the respective MACS Column data sheet.
2. Prepare column by rinsing with the appropriate amount of buffer:

MS: 500 μL	LS: 3 mL
-----------------------	----------
3. Apply cell suspension onto the column. Collect flow-through containing unlabeled cells.
4. Wash column with the appropriate amount of buffer. Collect unlabeled cells that pass through and combine with the flow-through from step 3.

MS: 3 \times 500 μL	LS: 3 \times 3 mL
----------------------------------	---------------------

▲ Note: Perform washing steps by adding buffer aliquots only when the column reservoir is empty.

5. Remove column from the separator and place it on a suitable collection tube.
6. Pipette the appropriate amount of buffer onto the column. Immediately flush out the magnetically labeled cells by firmly pushing the plunger into the column.

MS: 1 mL	LS: 5 mL
----------	----------
7. (Optional) To increase the purity of Ly-6G⁺ cells, the eluted fraction can be enriched over a second MS or LS Column. Repeat the magnetic separation procedure as described in steps 1 to 6 by using a new column.

Magnetic separation with XS Columns

For instructions on the column assembly and the separation refer to the XS Column data sheet.

Depletion with LD Columns

1. Place LD Column in the magnetic field of a suitable MACS Separator. For details refer to the LD Column data sheet.

- Prepare column by rinsing with 2 mL of buffer.
- Apply cell suspension onto the column.
- Collect unlabeled cells that pass through and wash column with 2x1 mL of buffer. Collect total flow-through; this is the unlabeled cell fraction. Perform washing steps by adding buffer two times. Only add new buffer when the column reservoir is empty.

Depletion with CS Columns

- Assemble CS Column and place it in the magnetic field of a suitable MACS Separator. For details refer to the CS Column data sheet.
- Prepare column by filling and rinsing with 60 mL of buffer. Attach a 22G flow resistor to the 3-way stopcock of the assembled column. For details refer to the CS Column data sheet.
- Apply cell suspension onto the column.
- Collect unlabeled cells that pass through and wash column with 30 mL buffer from the top. Collect total flow-through; this is the unlabeled cell fraction.

Depletion with D Columns

For instructions on column assembly and separation refer to the D Column data sheet.

Magnetic separation with the autoMACS® Pro Separator or the autoMACS® Separator

▲ Refer to the respective user manual for instructions on how to use the autoMACS® Pro Separator or the autoMACS Separator.

▲ Buffers used for operating the autoMACS Pro Separator or the autoMACS Separator should have a temperature of ≥ 10 °C.

▲ Program choice depends on the isolation strategy, the strength of magnetic labeling, and the frequency of magnetically labeled cells. For details refer to the section describing the cell separation programs in the respective user manual.

Magnetic separation with the autoMACS® Pro Separator

- Prepare and prime the instrument.
- Apply tube containing the sample and provide tubes for collecting the labeled and unlabeled cell fractions. Place sample tube in row A of the tube rack and the fraction collection tubes in rows B and C.
- For a standard separation choose one of the following programs:

Positive selection: Posseld2

Collect positive fraction in row C of the tube rack.

Depletion: Depletes

Collect negative fraction in row B of the tube rack.

Magnetic separation with the autoMACS® Separator

- Prepare and prime the instrument.
- Apply tube containing the sample and provide tubes for collecting the labeled and unlabeled cell fractions. Place sample tube at the uptake port and the fraction collection tubes at port neg1 and pos2.

- For a standard separation choose one of the following programs:

Positive selection: Posseld2

Collect positive fraction from outlet pos2.

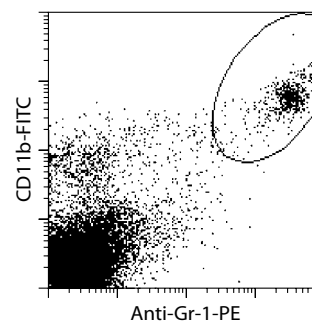
Depletion: Depletes

Collect negative fraction from outlet port neg1.

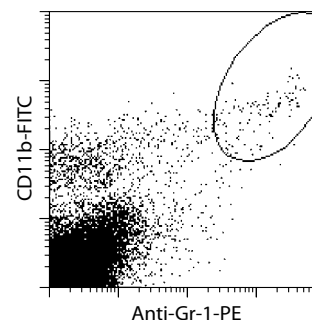
3. Example of a separation using the Anti-Ly-6G MicroBead Kit

Ly-6G⁺ cells were isolated from mouse spleen cells by using the Anti-Ly-6G MicroBead Kit, two MS Columns, and a MiniMACS™ Separator. The cells were fluorescently stained with Anti-Gr-1-PE (# 130-091-932) and CD11b-FITC (# 130-081-201). Cell debris and dead cells were excluded from the analysis based on scatter signals and propidium iodide fluorescence.

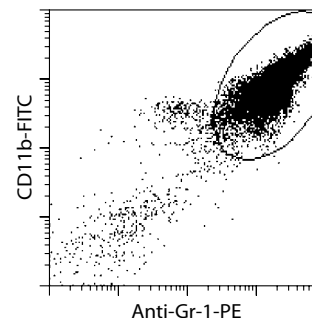
Spleen cells before separation



Spleen cells depleted of Ly-6G⁺ cells



Isolated Ly-6G⁺ cells



All protocols and data sheets are available at www.miltenyibiotec.com.

Warnings

Reagents contain sodium azide. Under acidic conditions sodium azide yields hydrazoic acid, which is extremely toxic. Azide compounds should be diluted with running water before discarding. These precautions are recommended to avoid deposits in plumbing where explosive conditions may develop.

Warranty

The products sold hereunder are warranted only to be free from defects in workmanship and material at the time of delivery to the customer. Miltenyi Biotec GmbH makes no warranty or representation, either expressed or implied, with respect to the fitness of a product for a particular purpose. There are no warranties, expressed or implied, which extend beyond the technical specifications of the products. Miltenyi Biotec GmbH's liability is limited to either replacement of the products or refund of the purchase price. Miltenyi Biotec GmbH is not liable for any property damage, personal injury or economic loss caused by the product.

autoMACS, MACS, and VioBlue are registered trademarks and gentleMACS, MidiMACS, MiniMACS, OctoMACS, QuadroMACS, SuperMACS, and VarioMACS are trademarks of Miltenyi Biotec GmbH.

Copyright © 2012 Miltenyi Biotec GmbH. All rights reserved.